



SUBMITTAL

**WP-DW-SERIES**

DOUBLE WALL PLATE HEAT EXCHANGERS

Models: WP10DW thru WP61DW

Submittal Sheet No. WP-2016B

Date: 07/20

Job Name _____	Submitted By _____	Date _____
Location _____	Approved By _____	Date _____
_____	Order No. _____	Date _____
Engineer _____	Notes _____	
Contractor _____	_____	
Sales Rep. _____	_____	

**Description**

AA tanks type WP-DW-series double-wall plate heat exchangers are ASME certified and designed to efficiently transfer heat from one fluid to another and providing cross connection control of the two fluids. The fluids are separated by two corrosion resistant heat transfer plates that provide an air gap between the fluids. Elastomer gaskets are used to provide fluid containment within the flow plates. The units are tailored to any fluid flow and temperature requirements to achieve the greatest economically efficient design.

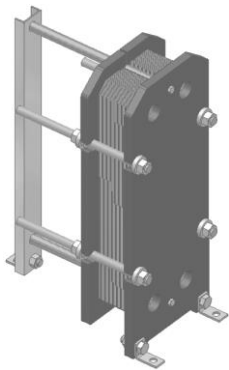
**Construction**

Plates: 316SS  
 Gaskets: Nitrile  
 Connections: 316SS  
 Heads: Carbon Steel

Optional: 304SS  
 Optional: EPDM  
 Optional: 304SS

**Performance**

Design Temperature: 230°F  
 Design Pressure: 150 psi  
 (320°F & 300 psi available)



Model Number	Part Number	Max Flow (GPM)	Tagging Information	Quantity
WP10DW	68010018	60		
WP21DW	68021060	250		
WP41DW	68041084	1,000		
WP45DW	68045096	1,000		
WP61DW	68061108	2,200		

**Typical Specification**

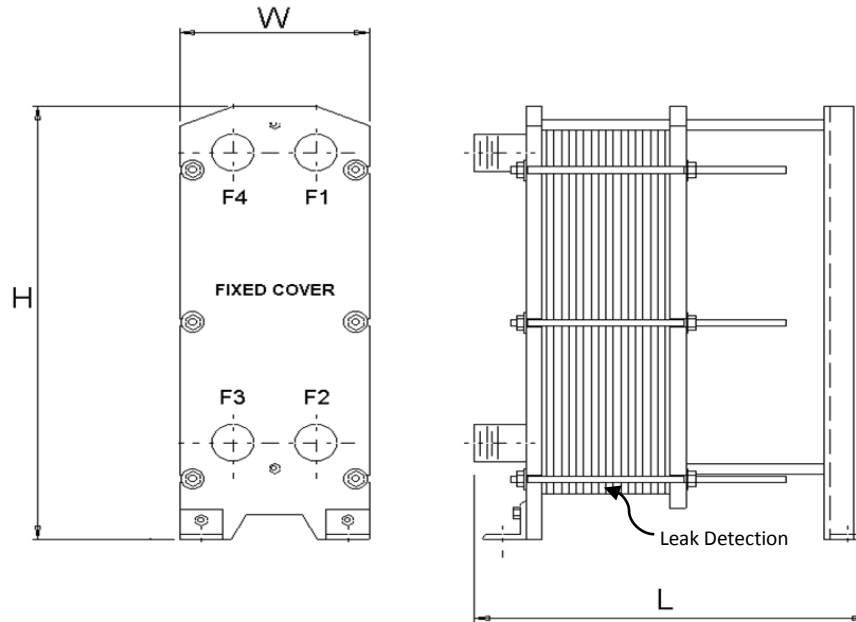
Furnish and install, as shown on plans, a Wessels model \_\_\_\_\_ to transfer \_\_\_\_\_ btu/hr from source fluid \_\_\_\_\_ to secondary fluid \_\_\_\_\_. Double-wall plating will be used to provide an air-gap to prevent cross connection of the two fluids. The gasket material is Nitrile. The heat exchanger must be constructed with most recent addendum of Section VIII, Div.1 of the ASME Boiler and Pressure Vessel Code and shall be constructed and stamped for 150 PSI working pressure @ 230°F.

Each heat exchanger shall be AA tanks Model \_\_\_\_\_ or approved equal.

25110 THOMAS DR • WARREN, MI 48091 • (586) 427-7700 • (586) 427-7895 FAX • www.aatanks.com



### Double-Wall Plate Heat Exchangers



### Capacities, Dimensions & Weights

Model	Maximum Flow rate (GPM)	Height (in.)	Width (in.)	Maximum Length (in.)	Conn. Size (in.)	Area Maximum (ft <sup>2</sup> )	Weight (lbs.)	
							Base	Per Plate
WP10DW	60	21	8	24	1	30	150	0.5
WP21DW	250	35	14	60	2	500	500	2
WP41DW	1,000	44	19	84	4	1,000	1,000	3.5
WP45DW	1,000	74	19	96	4	2,000	1,600	6
WP61DW	2,200	75	25	108	6	4,200	3,000	7

#### Notes

- ASME Certified
- Available in higher pressures and temperatures